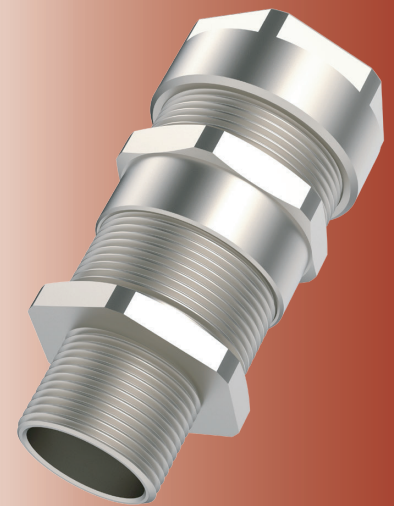








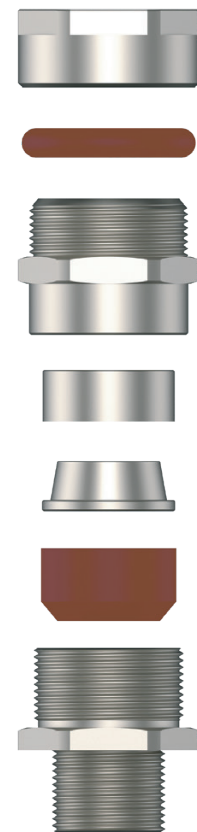
Cable Glands for All Types of Armoured Cables



Technical Details		
Material	Body Cap	Brass, Brass Nickel Plated, Stainless Steel,
	Inner Parts	Brass, Brass Nickel Plated, Stainless Steel,
	Seal	Halogen Free Silicone
	O-ring	Halogen Free Silicone
Ingress Protection Rating	IP 68 - 5 Bar, 30 min IP 66	
Operation Temperature	Seal Material	
	Silicone	-60°C to +130°C
Equipment For	Gas & Dust potentially explosive atmospheres	
Suitable for use in	Group I Group II Group III	
Equipment Marking	Ex db I Mb; Ex eb I Mb; Ex db IIC Gb; Ex eb IIC Gb; Ex tb IIIC Db	
Thread Type	<ul style="list-style-type: none"> • Metric (M) ISO Pitch 1,5 and 2,0 (for M80 and above) as standard. • NPT (N) ANSI ASME B1.20.1 • Other thread types also available upon request. 	
Cable Type	SWA - SWB - STA - PWA - AWA - Shielded	
Accessories	• Lock nuts	• Shrouds
	• Deluge Seal	• Lead Sheath Spring
	• Gaskets (Washers)	
	• Serrated Washers	
Remarks	• Earth tags	
	• Accessories must be ordered separately.	

Approvals	Certificate Number	Standards
	CESI 21 ATEX 031X	EN 60079-0, -1, -7, -31
	IECEx CES 22.0009X	IEC 60079-0, -1, -7, -31
	In progress	In progress
	TC RU C-TR.AA87.B.01120/23	GOCT 31610.0-2014 GOCT IEC 60079-1:2013 GOCT IEC 60079-31:2013
	DNV 23.0154 X	ABNT NBR IEC 60079-0:2013 ABNT NBR IEC 60079-1:2009 ABNT NBR IEC 60079-7:2008 ABNT NBR IEC 60079-31:2011
	In progress	In progress

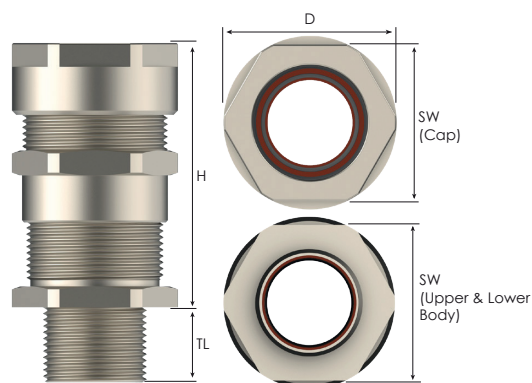
-For more information see our webpage
-The standard marking consists ATEX & IECEx only. Marking acc. to other standards on request.



Order Coding											
Part Number	Material	Seal	-	Lead Sheath Washer	-	Gasket (Washer)	Serrated Washer	Locknut	Shroud	Earth Tag	Deluge Seal
Mandatory	Mandatory	Mandatory	-	Option	-	Option	Option	Option	Option	Option	Option
See table	B Brass BN Brass nickel plated X Stainless steel 316L	S Silicone	-	LSK Lead Sheath Washer	-	WS Silicone	WSR Serrated washer	L Lock nut	S Shroud	E Earth tag	D Deluge Seal
Example											
VOLOSM	BN	S	-	LSK	-	WS	WSR	L	S	E	D

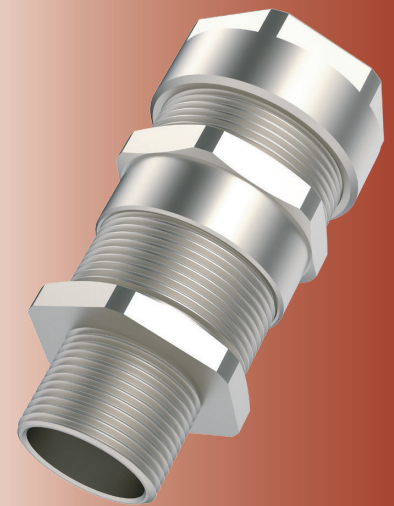
VOLANS

Cable Glands for All Types of Armoured Cables









Thread Type METRIC acc. to ISO 965 - 3											
Outer Thread Size (Male)	Clamping Range		Armour Wire Ø min-max mm	Shield Wire Ø min-max mm	Outer Thread Length TL mm	Spanner Width			Outer Ø D mm	max. Height H mm	Part Number
	Inner Sheath Ø min-max mm	Ø min-max mm				Cap SW Cap mm	Upper Body SW Upper Body mm	Lower Body SW Lower Body mm			
M12x1,5	3.0 - 8.0	5.5 - 12.0	0.8 - 1.25	0.2 - 0.8	15.0	22.0	22.0	19.0	24.0	57.0	VOL0SM
M16x1,5	3.0 - 8.0	5.5 - 12.0	0.8 - 1.25	0.2 - 0.8	15.0	22.0	22.0	19.0	24.0	57.0	VOL01SM
	6.0 - 12.0	9.0 - 16.0	0.8 - 1.25	0.2 - 0.8	15.0	24.0	24.0	24.0	26.5	57.0	VOL01M
M20x1,5	3.0 - 8.0	5.5 - 12.0	0.8 - 1.25	0.2 - 0.8	15.0	22.0	22.0	24.0	26.5	57.0	VOL1XSM
	6.0 - 12.0	9.0 - 16.0	0.8 - 1.25	0.2 - 0.8	15.0	24.0	24.0	24.0	26.5	57.0	VOL1SM
	6.0 - 14.0	12.0 - 20.0	0.8 - 1.25	0.2 - 0.8	15.0	30.0	30.0	30.0	33.0	60.0	VOL1M
M25x1,5	6.0 - 14.0	12.0 - 20.0	0.8 - 1.25	0.2 - 0.8	15.0	30.0	30.0	30.0	33.0	60.0	VOL2SM
	11.0 - 20.0	16.0 - 26.0	1.25 - 1.6	0.2 - 0.8	15.0	36.0	36.0	36.0	39.8	66.0	VOL2M
M32x1,5	11.0 - 20.0	16.0 - 26.0	1.25 - 1.6	0.2 - 0.8	15.0	36.0	36.0	36.0	39.8	66.0	VOL3SM
	16.0 - 26.5	20.0 - 33.0	1.6 - 2.0	0.2 - 0.8	15.0	46.0	46.0	46.0	51.0	76.0	VOL3M
M40x1,5	16.0 - 26.5	20.0 - 33.0	1.6 - 2.0	0.2 - 0.8	15.0	46.0	46.0	46.0	51.0	76.0	VOL4SM
	22.0 - 32.5	29.0 - 41.0	1.6 - 2.0	0.2 - 0.8	15.0	55.0	55.0	55.0	62.5	85.0	VOL4M
M50x1,5	22.0 - 32.5	29.0 - 41.0	1.6 - 2.0	0.2 - 0.8	15.0	55.0	55.0	55.0	62.5	85.0	VOL5SM
	29.0 - 44.0	36.0 - 52.0	1.8 - 2.5	0.2 - 1.0	15.0	65.0	65.0	65.0	74.5	100.0	VOL5M
M63x1,5	29.0 - 44.0	36.0 - 52.0	1.8 - 2.5	0.2 - 1.0	15.0	65.0	65.0	68.0	75.0	100.0	VOL6SM
	43.0 - 56.0	50.0 - 65.0	1.8 - 2.5	0.2 - 1.0	15.0	80.0	80.0	80.0	91.0	102.0	VOL6M
M75x1,5	43.0 - 56.0	50.0 - 65.0	1.8 - 2.5	0.2 - 1.0	15.0	80.0	80.0	80.0	106.0	102.0	VOL7SM
	54.0 - 68.0	61.0 - 78.0	1.8 - 2.5	0.2 - 1.0	15.0	95.0	95.0	95.0	106.0	115.0	VOL7M
M80x1,5	54.0 - 68.0	61.0 - 78.0	1.8 - 2.5	0.2 - 1.0	20.0	95.0	95.0	95.0	118.0	115.0	VOL80SM
	65.0 - 75.0	75.0 - 89.0	2.0 - 3.5	0.3 - 1.0	20.0	106.0	106.0	106.0	118.0	126.0	VOL80M
M90x1,5	54.0 - 68.0	61.0 - 78.0	1.8 - 2.5	0.2 - 1.0	20.0	95.0	95.0	95.0	118.0	115.0	VOL8SM
	65.0 - 78.0	75.0 - 89.0	2.0 - 3.5	0.3 - 1.0	20.0	106.0	106.0	106.0	118.0	126.0	VOL8M
M100x1,5	65.0 - 78.0	75.0 - 89.0	2.0 - 3.5	0.3 - 1.0	20.0	106.0	106.0	106.0	139.0	126.0	VOL9SM
	76.0 - 92.0	88.0 - 104.0	2.5 - 4.0	0.3 - 1.0	20.0	127.0	127.0	127.0	139.0	134.0	VOL9M

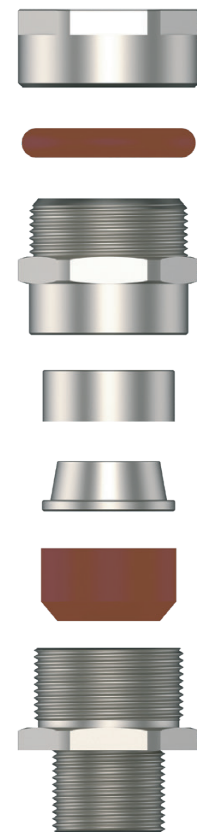
Cable Glands for All Types of Armoured Cables



Technical Details		
Material	Body Cap	Brass, Brass Nickel Plated, Stainless Steel,
	Inner Parts	Brass, Brass Nickel Plated, Stainless Steel,
	Seal	Halogen Free Silicone
	O-ring	Halogen Free Silicone
Ingress Protection Rating	IP 68 - 5 Bar, 30 min IP 66	
Operation Temperature	Seal Material	
	Silicone	-60°C to +130°C
Equipment For	Gas & Dust potentially explosive atmospheres	
Suitable for use in	Group I Group II Group III	
Equipment Marking	Ex db I Mb; Ex eb I Mb; Ex db IIC Gb; Ex eb IIC Gb; Ex tb IIIC Db	
Thread Type	<ul style="list-style-type: none"> • Metric (M) ISO Pitch 1,5 and 2,0 (for M80 and above) as standard. • NPT (N) ANSI ASME B1.20.1 • Other thread types also available upon request. 	
Cable Type	SWA - SWB - STA - PWA - AWA - Shielded	
Accessories	• Lock nuts	• Shrouds
	• Deluge Seal	• Lead Sheath Spring
	• Gaskets (Washers)	
	• Serrated Washers	
	• Earth tags	
Remarks	• Accessories must be ordered separately.	

Approvals	Certificate Number	Standards
	CESI 21 ATEX 031X	EN 60079-0, -1, -7, -31
	IECEx CES 22.0009X	IEC 60079-0, -1, -7, -31
	In progress	In progress
	TC RU C-TR.AA87.B.01120/23	GOCT 31610.0-2014 GOCT IEC 60079-1:2013 GOCT IEC 60079-31:2013
	DNV 23.0154 X	ABNT NBR IEC 60079-0:2013 ABNT NBR IEC 60079-1:2009 ABNT NBR IEC 60079-7:2008 ABNT NBR IEC 60079-31:2011
	In progress	In progress

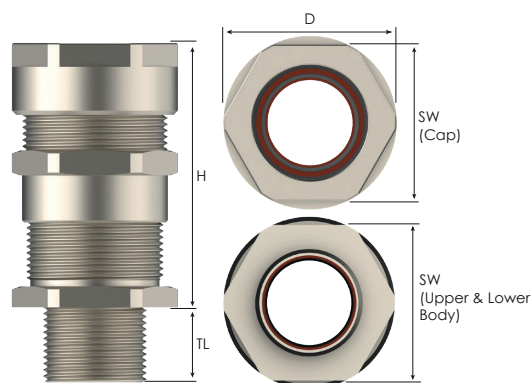
-For more information see our webpage
-The standard marking consists ATEX & IECEx only. Marking acc. to other standards on request.



Order Coding											
Part Number	Material	Seal	-	Lead Sheath Washer	-	Gasket (Washer)	Serrated Washer	Locknut	Shroud	Earth Tag	Deluge Seal
Mandatory	Mandatory	Mandatory	-	Option	-	Option	Option	Option	Option	Option	Option
See table	B Brass BN Brass nickel plated X Stainless steel 316L	S Silicone	-	LSK Lead Sheath Washer	-	WS Silicone	WSR Serrated washer	L Lock nut	S Shroud	E Earth tag	D Deluge Seal
Example											
VOLOSM	BN	S	-	LSK	-	WS	WSR	L	S	E	D

VOLANS

Cable Glands for All Types of Armoured Cables



Thread Type NPT acc. to ANSI ASME B1.20.1											
Outer Thread Size	Clamping Range		Armour Wire Ø min-max mm	Shield Wire Ø min-max mm	Outer Thread Length TL mm	Spanner Width			Outer Ø D mm	max. Height H mm	Part Number
	Inner Sheath Ø min-max mm	Ø min-max mm				Cap SW mm	Upper Body SW mm	Lower Body SW mm			
1/4"	3.0 - 8.0	5.5 - 12.0	0.8 - 1.25	0.2 - 0.8	16.0	22.0	22.0	19.0	24.0	57.0	VOL0SN
3/8"	3.0 - 8.0	5.5 - 12.0	0.8 - 1.25	0.2 - 0.8	16.0	22.0	22.0	19.0	24.0	57.0	VOL01SN
	6.0 - 12.0	9.0 - 16.0	0.8 - 1.25	0.2 - 0.8	16.0	24.0	24.0	24.0	26.5	57.0	VOL01N
1/2"	3.0 - 8.0	5.5 - 12.0	0.8 - 1.25	0.2 - 0.8	21.0	22.0	22.0	24.0	26.5	57.0	VOL1XSN
	6.0 - 12.0	9.0 - 16.0	0.8 - 1.25	0.2 - 0.8	21.0	24.0	24.0	24.0	26.5	57.0	VOL1SN
	6.0 - 14.0	12.0 - 20.0	0.8 - 1.25	0.2 - 0.8	21.0	30.0	30.0	30.0	33.0	60.0	VOL1N
3/4"	6.0 - 14.0	12.0 - 20.0	0.8 - 1.25	0.2 - 0.8	21.0	30.0	30.0	30.0	33.0	60.0	VOL2SN
	11.0 - 20.0	16.0 - 26.0	1.25 - 1.6	0.2 - 0.8	21.0	36.0	36.0	36.0	39.8	66.0	VOL2N
1"	11.0 - 20.0	16.0 - 26.0	1.25 - 1.6	0.2 - 0.8	26.0	36.0	36.0	36.0	39.8	66.0	VOL3SN
	16.0 - 26.5	20.0 - 33.0	1.6 - 2.0	0.2 - 0.8	26.0	46.0	46.0	46.0	51.0	76.0	VOL3N
1 1/4"	16.0 - 26.5	20.0 - 33.0	1.6 - 2.0	0.2 - 0.8	28.0	46.0	46.0	46.0	51.0	76.0	VOL4SN
	22.0 - 32.5	29.0 - 41.0	1.6 - 2.0	0.2 - 0.8	28.0	55.0	55.0	55.0	62.5	85.0	VOL4N
1 1/2"	22.0 - 32.5	29.0 - 41.0	1.6 - 2.0	0.2 - 0.8	28.0	55.0	55.0	55.0	62.5	85.0	VOL5SN
	29.0 - 42.3	36.0 - 52.0	1.8 - 2.5	0.2 - 1.0	28.0	65.0	65.0	65.0	74.5	100.0	VOL5N
2"	29.0 - 44.0	36.0 - 52.0	1.8 - 2.5	0.2 - 1.0	28.0	68.0	65.0	65.0	75.0	100.0	VOL6SN
	43.0 - 54.3	50.0 - 65.0	1.8 - 2.5	0.2 - 1.0	28.0	80.0	80.0	80.0	91.0	102.0	VOL6N
2 1/2"	43.0 - 56.0	50.0 - 65.0	1.8 - 2.5	0.2 - 1.0	41.0	80.0	80.0	80.0	106.0	102.0	VOL7SN
	54.0 - 65.3	61.0 - 78.0	1.8 - 2.5	0.2 - 1.0	41.0	95.0	95.0	95.0	106.0	115.0	VOL7N
3"	54.0 - 68.0	61.0 - 78.0	1.8 - 2.5	0.2 - 1.0	43.0	95.0	95.0	95.0	118.0	115.0	VOL80SN
	65.0 - 75.0	75.0 - 89.0	2.0 - 3.5	0.3 - 1.0	43.0	106.0	106.0	106.0	118.0	126.0	VOL80N
3 1/2"	65.0 - 78.0	75.0 - 89.0	2.0 - 3.5	0.3 - 1.0	43.0	106.0	106.0	106.0	139.0	126.0	VOL9SN
	76.0 - 92.0	88.0 - 104.0	2.5 - 4.0	0.3 - 1.0	43.0	127.0	127.0	127.0	139.0	134.0	VOL9N
4"	65.0 - 78.0	75.0 - 89.0	2.0 - 3.5	0.3 - 1.0	44.0	106.0	106.0	106.0	139.0	126.0	VOL10SN
	76.0 - 92.0	88.0 - 104.0	2.5 - 4.0	0.3 - 1.0	44.0	127.0	127.0	127.0	139.0	134.0	VOL10N